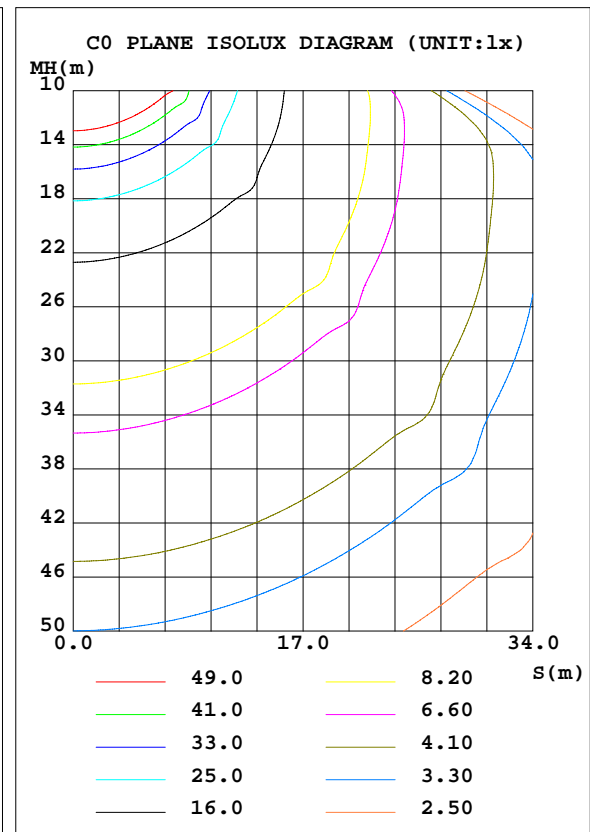
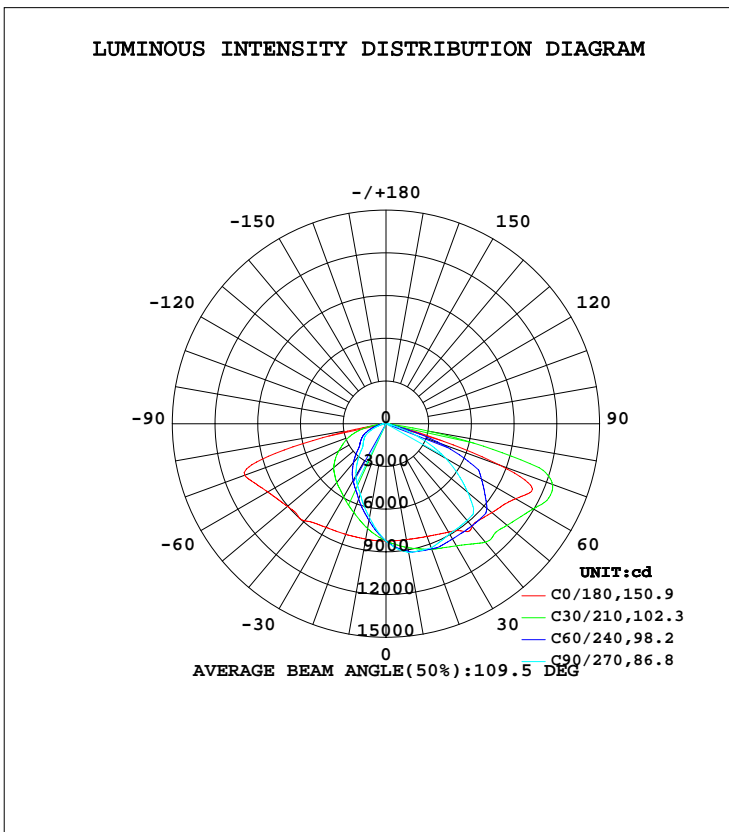


EVERFINE GONIOPHOTOMETERS SYSTEM TEST REPORT

LUMINAIRE PHOTOMETRIC TEST REPORT

Test:U:119.9V I:1.995A P:238.2W PF:0.9956 Lamp Flux:32370.3x1 lm		

DATA OF LAMP		PHOTOMETRIC DATA Eff: 135.90 lm/W			
MODEL		I _{max} (cd)	14124	S/MH(C0/180)	1.63
NOMINAL POWER(W)	240	LOR(%)	100.0	S/MH(C90/270)	0.79
RATED VOLTAGE(V)	120	TOTAL FLUX(lm)	32370	η UP, DN(C0-180)	0.0,67.0
NOMINAL FLUX(lm)	32370.3	CIE CLASS	DIRECT	η UP, DN(C180-360)	0.0,33.0
LAMPS INSIDE	1	η up(%)	0.0	CIBSE SHR NOM	1.50
TEST VOLTAGE(V)	120	η down(%)	100.0	CIBSE SHR MAX	1.55



C Range: 0 - 360DEG
 C Interval: 5.0DEG
 Test Speed: HIGH
 Temperature:25DEG
 Operators:
 Test Date:2016-09-05

γ Range: 0 - 90DEG
 γ Interval: 0.5DEG
 Test System:EVERFINE GO-2000B_V1 SYSTEM V2.0.350
 Humidity:65.0%
 Test Distance:7.850m [K=1.0000]
 Remarks:

EVERFINE GONIOPHOTOMETERS SYSTEM TEST REPORT

ZONAL FLUX DIAGRAM

ZONAL FLUX DIAGRAM:

γ	C0	C45	C90	C135	C180	C225	C270	C315	γ	Φ zone	Φ total	%lum, lamp
5	824.3	865.6	879.9	865.2	824.0	771.5	749.2	771.3	0- 5	196.2	196.2	0.61,0.61
10	826.5	899.5	917.6	897.4	822.7	714.7	668.3	715.3	5- 10	581.5	777.8	2.4,2.4
15	832.1	925.7	922.7	921.4	822.7	656.2	597.7	659.3	10- 15	948.2	1726	5.33,5.33
20	842.4	939.1	927.8	932.4	826.9	605.0	527.2	611.0	15- 20	1291	3017	9.32,9.32
25	857.5	957.6	910.5	948.1	832.0	554.9	475.5	563.3	20- 25	1613	4630	14.3,14.3
30	878.9	972.4	893.2	956.7	840.9	512.4	423.8	523.8	25- 30	1911	6541	20.2,20.2
35	918.0	988.6	889.4	963.1	856.6	475.6	359.1	490.1	30- 35	2192	8734	27,27
40	941.5	1019	885.5	976.6	889.6	435.9	294.3	448.8	35- 40	2464	11198	34.6,34.6
45	945.5	1033	868.8	989.6	890.5	384.2	233.9	394.0	40- 45	2685	13882	42.9,42.9
50	971.0	1037	749.3	1002	903.2	329.9	209.2	334.7	45- 50	2842	16725	51.7,51.7
55	1001	1045	617.0	1008	926.4	276.6	189.0	274.4	50- 55	2947	19672	60.8,60.8
60	1053	1022	484.7	1002	958.7	246.3	168.7	241.1	55- 60	3017	22688	70.1,70.1
65	1127	1003	335.8	999.5	1005	211.3	127.4	203.4	60- 65	3054	25743	79.5,79.5
70	849.7	830.8	187.0	846.0	1057	167.3	86.10	152.5	65- 70	2924	28667	88.6,88.6
75	203.9	429.7	51.98	491.2	804.5	118.4	47.69	86.20	70- 75	2240	30906	95.5,95.5
80	25.33	56.46	28.38	172.9	164.0	70.83	32.49	24.54	75- 80	1057	31963	98.7,98.7
85	10.82	32.98	18.70	101.9	18.60	40.68	20.18	15.71	80- 85	302.4	32266	99.7,99.7
90	8.603	5.865	9.020	13.35	7.602	9.813	7.874	7.369	85- 90	104.5	32370	100,100
95									90- 95			
100									95-100			
105									100-105			
110									105-110			
115									110-115			
120									115-120			
125									120-125			
130									125-130			
135									130-135			
140									135-140			
145									140-145			
150									145-150			
155									150-155			
160									155-160			
165									160-165			
170									165-170			
175									170-175			
180									175-180			
DEG	LUMINOUS INTENSITY:×10cd								UNIT:lm			

Conical surface Flux(90deg): 13882 lm

%lum = 42.9%
%lamp = 42.9%

Conical surface Flux(120deg): 22688 lm

%lum = 70.1%
%lamp = 70.1%

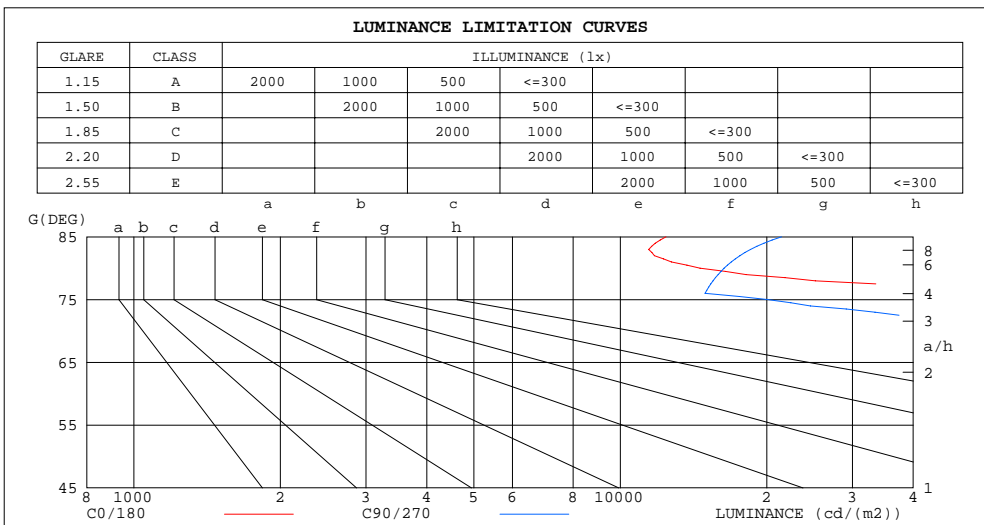
C Range: 0 - 360DEG
C Interval: 5.0DEG
Test Speed: HIGH
Temperature:25DEG
Operators:
Test Date:2016-09-05

γ Range: 0 - 90DEG
γ Interval: 0.5DEG
Test System:EVERFINE GO-2000B_V1 SYSTEM V2.0.350
Humidity:65.0%
Test Distance:7.850m [K=1.0000]
Remarks:

EVERFINE GONIOPHOTOMETERS SYSTEM TEST REPORT

LUMINANCE LIMITATION CURVES

Test:U:119.9V I:1.995A P:238.2W PF:0.9956 Lamp Flux:32370.3x1 lm		



LUMINANCE cd/(m2)		
G(DEG)	C0/180	C90/270
85	12409	21453
80	14588	16341
75	78765	20082
70	248427	54661
65	266699	79468
60	210602	96948
55	174503	107578
50	151058	116576
45	133707	122866

C Range: 0 - 360DEG
 C Interval: 5.0DEG
 Test Speed: HIGH
 Temperature: 25DEG
 Operators:
 Test Date: 2016-09-05

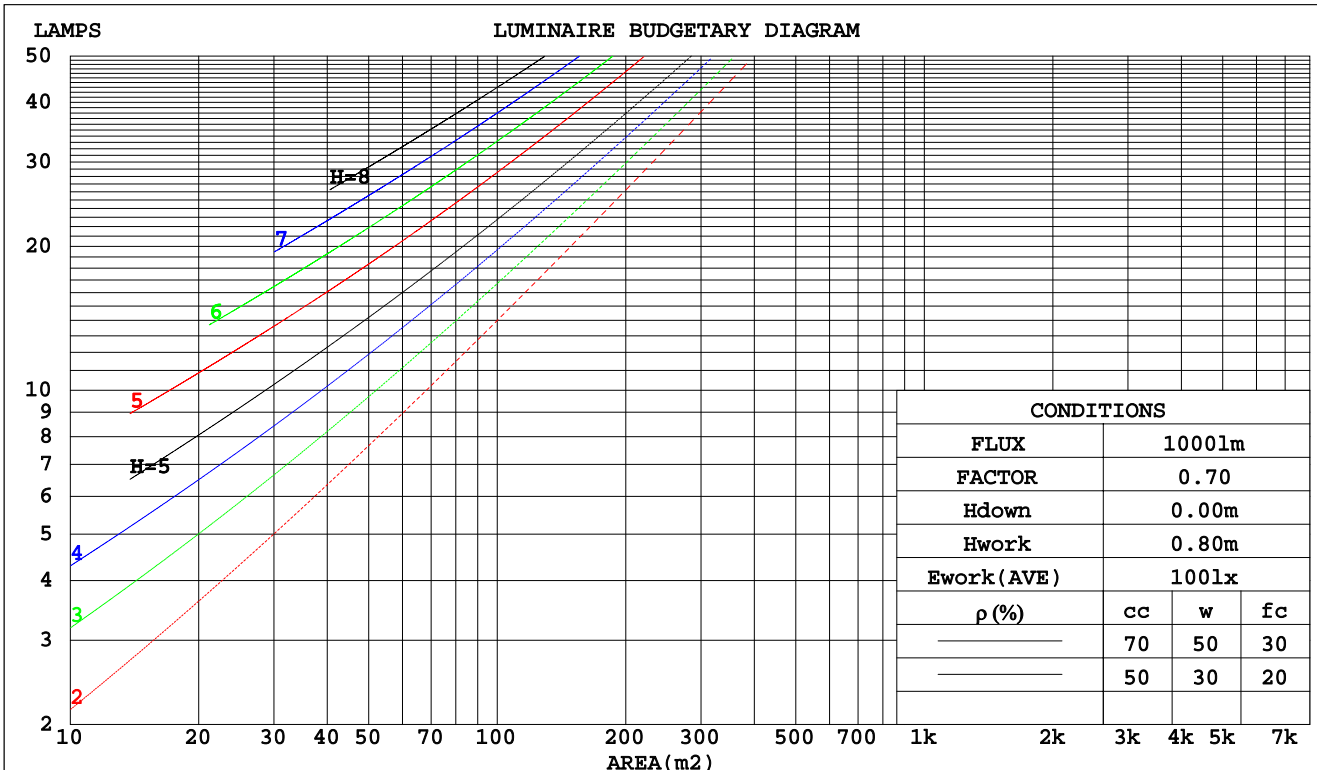
γ Range: 0 - 90DEG
 γ Interval: 0.5DEG
 Test System: EVERFINE GO-2000B_V1 SYSTEM V2.0.350
 Humidity: 65.0%
 Test Distance: 7.850m [K=1.0000]
 Remarks:

EVERFINE GONIOPHOTOMETERS SYSTEM TEST REPORT

CU AND LUMINAIRE BUDGETARY ESTIMATE DIAGRAM

Test:U:119.9V I:1.995A P:238.2W PF:0.9956 Lamp Flux:32370.3x1 lm		

pcc	80%			70%			50%			30%			10%			0
pw	50%	30%	10%	50%	30%	10%	50%	30%	10%	50%	30%	10%	50%	30%	10%	0
pfc	20%			20%			20%			20%			20%			0
RCR	RCR:Room Cavity Ratio															
	Coefficients of Utilization(CU)															
0.0	1.19	1.19	1.19	1.16	1.16	1.16	1.11	1.11	1.11	1.06	1.06	1.06	1.02	1.02	1.02	1.00
1.0	1.02	.98	.93	1.00	.96	.92	.96	.92	.89	.92	.89	.86	.88	.86	.84	.81
2.0	.87	.80	.73	.85	.78	.72	.82	.76	.71	.78	.73	.69	.75	.71	.67	.65
3.0	.75	.66	.59	.74	.65	.58	.70	.63	.57	.68	.61	.56	.65	.60	.55	.53
4.0	.66	.56	.48	.64	.55	.48	.62	.54	.47	.59	.52	.47	.57	.51	.46	.44
5.0	.58	.48	.41	.57	.47	.40	.54	.46	.40	.52	.45	.40	.50	.44	.39	.37
6.0	.51	.42	.35	.50	.41	.35	.49	.40	.34	.47	.40	.34	.45	.39	.34	.31
7.0	.46	.37	.30	.45	.36	.30	.44	.36	.30	.42	.35	.30	.41	.34	.29	.27
8.0	.42	.33	.27	.41	.33	.27	.40	.32	.26	.39	.31	.26	.37	.31	.26	.24
9.0	.38	.30	.24	.38	.29	.24	.36	.29	.23	.35	.28	.23	.34	.28	.23	.21
10.0	.35	.27	.21	.35	.27	.21	.34	.26	.21	.33	.26	.21	.32	.25	.21	.19



C Range: 0 - 360DEG
 C Interval: 5.0DEG
 Test Speed: HIGH
 Temperature: 25DEG
 Operators:
 Test Date: 2016-09-05

γ Range: 0 - 90DEG
 γ Interval: 0.5DEG
 Test System: EVERFINE GO-2000B_V1 SYSTEM V2.0.350
 Humidity: 65.0%
 Test Distance: 7.850m [K=1.0000]
 Remarks:

EVERFINE GONIOPHOTOMETERS SYSTEM TEST REPORT

WEC AND CCEC

Test:U:119.9V I:1.995A P:238.2W PF:0.9956 Lamp Flux:32370.3x1 lm															

ρcc	80%			70%			50%			30%			10%			0
ρw	50%	30%	10%	50%	30%	10%	50%	30%	10%	50%	30%	10%	50%	30%	10%	0
ρfc	20%			20%			20%			20%			20%			0
RCR	RCR:Room Cavity Ratio						Wall Exitance Coefficients(WEC)									
0.0																
1.0	.340	.193	.061	.333	.190	.060	.319	.183	.058	.307	.177	.057	.296	.171	.055	
2.0	.322	.177	.054	.316	.174	.054	.304	.169	.053	.293	.164	.051	.283	.160	.050	
3.0	.297	.158	.047	.291	.156	.047	.281	.152	.046	.271	.148	.046	.262	.145	.045	
4.0	.272	.141	.042	.267	.140	.041	.257	.137	.041	.249	.134	.040	.240	.131	.040	
5.0	.250	.127	.037	.245	.126	.037	.237	.123	.036	.229	.121	.036	.221	.118	.036	
6.0	.230	.115	.033	.226	.114	.033	.218	.112	.033	.211	.110	.032	.205	.108	.032	
7.0	.212	.105	.030	.209	.104	.030	.202	.102	.029	.196	.100	.029	.190	.099	.029	
8.0	.197	.096	.027	.194	.096	.027	.188	.094	.027	.182	.092	.027	.177	.091	.026	
9.0	.184	.089	.025	.181	.088	.025	.176	.087	.025	.171	.086	.024	.166	.084	.024	
10.0	.172	.083	.023	.170	.082	.023	.165	.081	.023	.160	.080	.023	.156	.078	.022	

ρcc	80%			70%			50%			30%			10%			0
ρw	50%	30%	10%	50%	30%	10%	50%	30%	10%	50%	30%	10%	50%	30%	10%	0
ρfc	20%			20%			20%			20%			20%			0
RCR	RCR:Room Cavity Ratio						Ceiling Cavity Exitance Coefficients(CCEC)									
0.0	.190	.190	.190	.163	.163	.163	.111	.111	.111	.064	.064	.064	.020	.020	.020	
1.0	.182	.156	.132	.156	.134	.114	.107	.092	.079	.061	.053	.046	.020	.017	.015	
2.0	.176	.132	.094	.151	.113	.082	.103	.078	.057	.060	.046	.033	.019	.015	.011	
3.0	.170	.114	.070	.145	.099	.061	.100	.069	.043	.058	.040	.025	.019	.013	.008	
4.0	.162	.101	.055	.139	.088	.048	.096	.061	.034	.055	.036	.020	.018	.012	.007	
5.0	.155	.091	.044	.133	.079	.039	.092	.055	.027	.053	.032	.016	.017	.011	.005	
6.0	.148	.083	.037	.127	.072	.032	.088	.050	.023	.051	.030	.013	.016	.010	.004	
7.0	.141	.076	.031	.121	.066	.027	.084	.046	.019	.049	.027	.012	.016	.009	.004	
8.0	.134	.071	.027	.115	.061	.024	.080	.043	.017	.046	.025	.010	.015	.008	.003	
9.0	.127	.066	.024	.110	.057	.021	.076	.040	.015	.044	.024	.009	.014	.008	.003	
10.0	.121	.061	.022	.104	.053	.019	.072	.037	.013	.042	.022	.008	.014	.007	.003	

C Range: 0 - 360DEG
 C Interval: 5.0DEG
 Test Speed: HIGH
 Temperature:25DEG
 Operators:
 Test Date:2016-09-05

γ Range: 0 - 90DEG
 γ Interval: 0.5DEG
 Test System:EVERFINE GO-2000B_V1 SYSTEM V2.0.350
 Humidity:65.0%
 Test Distance:7.850m [K=1.0000]
 Remarks:

EVERFINE GONIOPHOTOMETERS SYSTEM TEST REPORT

UGR(Unified Glare Rating) Table

Test:U:119.9V I:1.995A P:238.2W PF:0.9956 Lamp Flux:32370.3x1 lm										
ceiling/cavity	0.7	0.7	0.5	0.5	0.3	0.7	0.7	0.5	0.5	0.3
walls	0.5	0.3	0.5	0.3	0.3	0.5	0.3	0.5	0.3	0.3
working plane	0.2	0.2	0.2	0.2	0.2	0.2	0.2	0.2	0.2	0.2
Room dimensions	Viewed crosswise					Viewed endwise				
x = 2H y = 2H	34.2	35.9	34.5	36.1	36.3	30.3	32.0	30.6	32.2	32.4
3H	37.4	39.0	37.7	39.2	39.5	31.0	32.5	31.3	32.7	33.0
4H	37.6	39.1	37.9	39.3	39.6	30.9	32.4	31.2	32.6	32.9
6H	37.5	38.9	37.8	39.2	39.5	30.8	32.2	31.2	32.5	32.8
8H	37.4	38.8	37.8	39.1	39.4	30.8	32.1	31.1	32.4	32.7
12H	37.4	38.7	37.8	39.0	39.3	30.7	32.0	31.1	32.3	32.6
4H 2H	35.1	36.5	35.4	36.8	37.1	32.5	34.0	32.8	34.2	34.5
3H	38.7	39.9	39.0	40.2	40.6	33.2	34.5	33.6	34.8	35.1
4H	39.1	40.3	39.5	40.6	41.0	33.2	34.4	33.6	34.7	35.0
6H	39.1	40.1	39.5	40.5	40.8	33.1	34.2	33.5	34.5	34.9
8H	39.0	40.0	39.4	40.4	40.8	33.1	34.1	33.5	34.4	34.8
12H	39.0	39.9	39.4	40.3	40.7	33.1	34.0	33.5	34.3	34.8
8H 4H	39.3	40.2	39.7	40.6	41.0	34.5	35.5	34.9	35.8	36.2
6H	39.3	40.1	39.8	40.5	41.0	34.4	35.2	34.9	35.6	36.1
8H	39.3	40.0	39.7	40.4	40.9	34.4	35.1	34.9	35.5	36.0
12H	39.3	39.9	39.7	40.3	40.8	34.4	35.0	34.9	35.4	35.9
12H 4H	39.2	40.1	39.7	40.5	40.9	34.5	35.4	34.9	35.8	36.2
6H	39.3	40.0	39.7	40.4	40.9	34.5	35.2	34.9	35.6	36.1
8H	39.3	39.9	39.7	40.3	40.8	34.4	35.1	34.9	35.5	36.0
Variations with the observer position at spacings:										
S = 1.0H	+ 0.1 / - 0.1					+ 0.2 / - 0.3				
1.5H	+ 0.5 / - 0.7					+ 0.4 / - 0.5				
2.0H	+ 1.0 / - 0.5					+ 0.8 / - 0.8				

CIE Pub.117 Corrected 32370 lm Total Lamp Luminous Flux. (8log(F/F0) = 12.1)

C Range: 0 - 360DEG
 C Interval: 5.0DEG
 Test Speed: HIGH
 Temperature:25DEG
 Operators:
 Test Date:2016-09-05

γ Range: 0 - 90DEG
 γ Interval: 0.5DEG
 Test System:EVERFINE GO-2000B_V1 SYSTEM V2.0.350
 Humidity:65.0%
 Test Distance:7.850m [K=1.0000]
 Remarks:

EVERFINE GONIOPHOTOMETERS SYSTEM TEST REPORT

UTILIZATION FACTORS TABLE

Test:U:119.9V I:1.995A P:238.2W PF:0.9956 Lamp Flux:32370.3x1 lm		

REFLECTANCE										
Ceiling	0.8	0.8	0.8	0.7	0.7	0.7	0.5	0.5	0.5	0
Walls	0.7	0.5	0.3	0.7	0.5	0.3	0.7	0.5	0.3	0
Working plane	0.2	0.2	0.2	0.2	0.2	0.2	0.2	0.2	0.2	0
ROOM INDEX	UTILIZATION FACTORS(PERCENT) $k(RI) \times RCR = 5$									
k = 0.60	52	40	32	51	39	32	50	39	32	25
0.80	62	49	41	61	49	41	59	48	40	33
1.00	71	58	50	69	57	50	67	59	49	41
1.25	78	66	58	76	65	58	74	64	57	49
1.50	84	72	64	82	71	64	79	70	63	54
2.00	91	82	74	89	80	74	86	78	72	63
2.50	96	87	80	94	86	80	90	83	78	69
3.00	100	92	86	98	91	85	93	88	83	74
4.00	105	98	93	102	97	92	98	93	89	80
5.00	108	102	98	105	100	96	100	97	93	84
ROOM INDEX	UF(total)									Direct
According to DIN EN 13032-2 2004			Suspended				SHRNOM = 1.25			

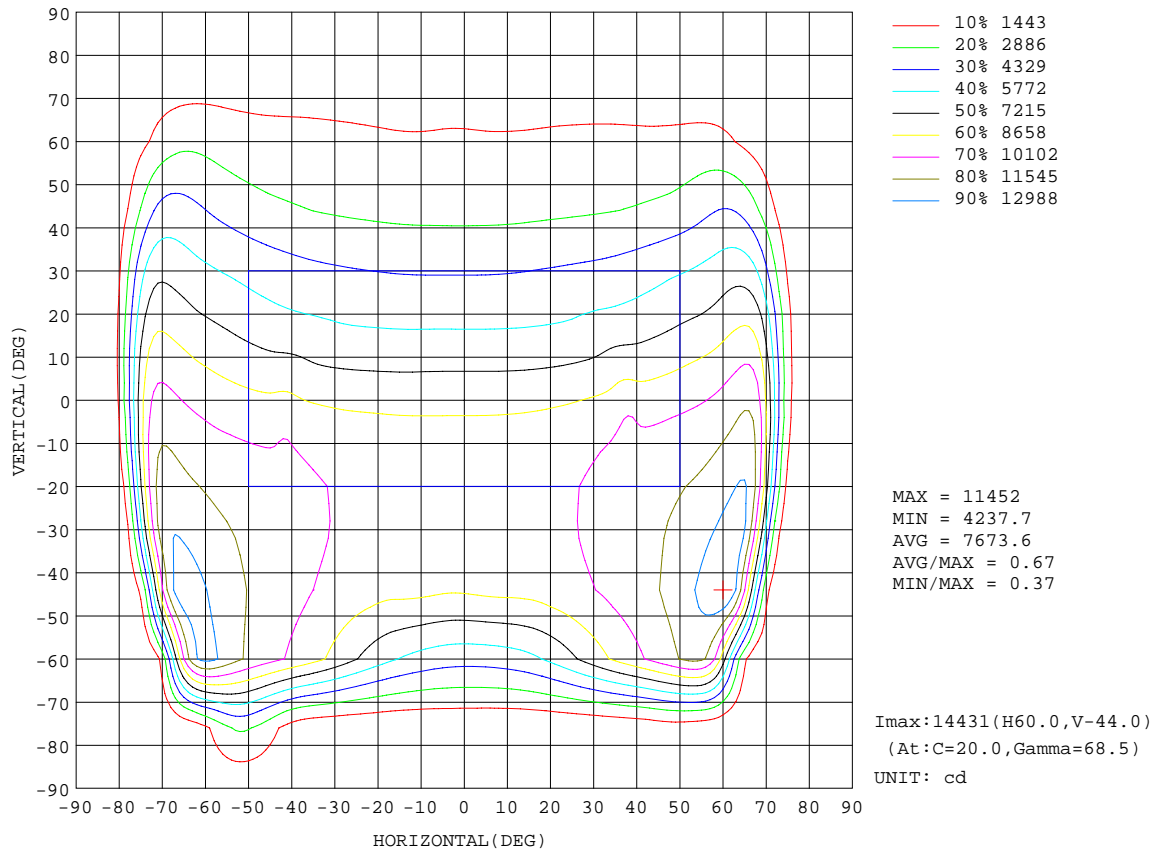
C Range: 0 - 360DEG
 C Interval: 5.0DEG
 Test Speed: HIGH
 Temperature:25DEG
 Operators:
 Test Date:2016-09-05

γ Range: 0 - 90DEG
 γ Interval: 0.5DEG
 Test System:EVERFINE GO-2000B_V1 SYSTEM V2.0.350
 Humidity:65.0%
 Test Distance:7.850m [K=1.0000]
 Remarks:

EVERFINE GONIOPHOTOMETERS SYSTEM TEST REPORT

ISOCANDELA DIAGRAM

Test:U:119.9V I:1.995A P:238.2W PF:0.9956 Lamp Flux:32370.3x1 lm		



C Range: 0 - 360DEG
 C Interval: 5.0DEG
 Test Speed: HIGH
 Temperature: 25DEG
 Operators:
 Test Date: 2016-09-05

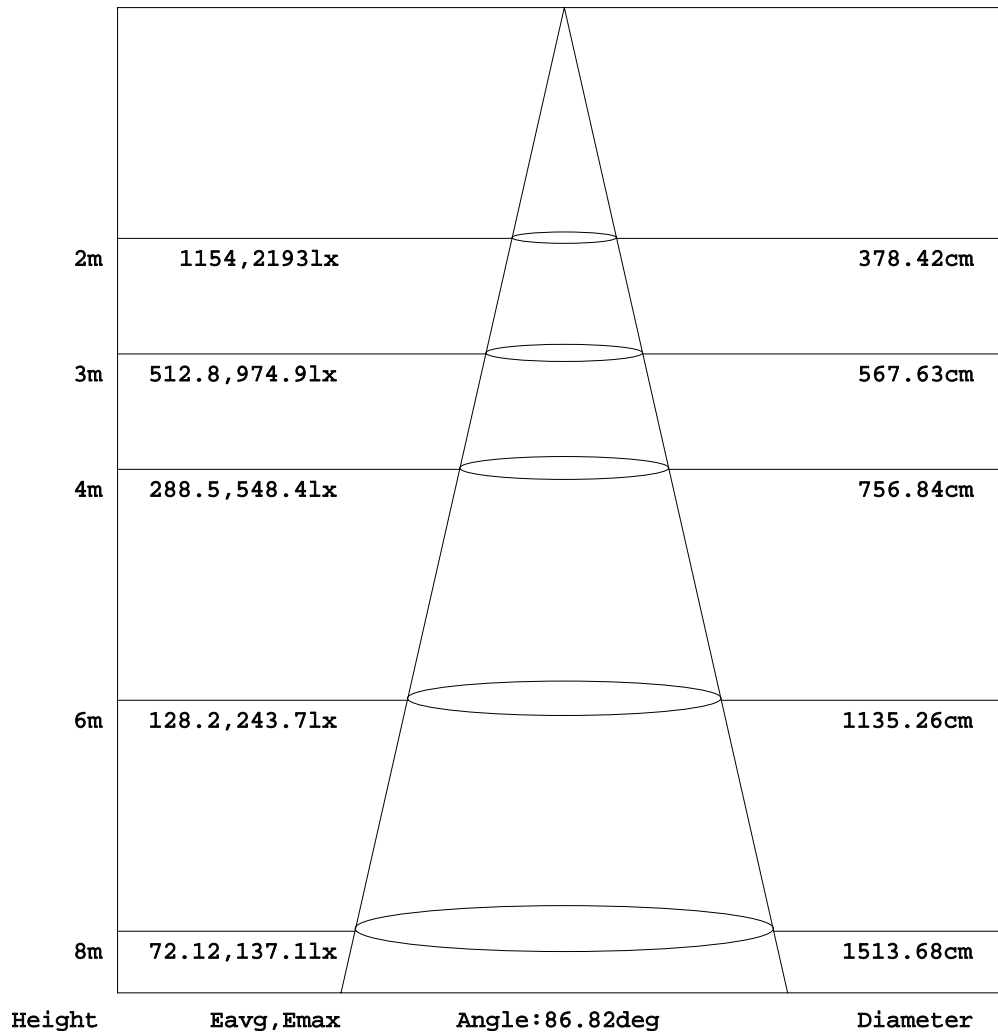
γ Range: 0 - 90DEG
 γ Interval: 0.5DEG
 Test System: EVERFINE GO-2000B_V1 SYSTEM V2.0.350
 Humidity: 65.0%
 Test Distance: 7.850m [K=1.0000]
 Remarks:

EVERFINE GONIOPHOTOMETERS SYSTEM TEST REPORT

AAI Figure

Test:U:119.9V I:1.995A P:238.2W PF:0.9956 Lamp Flux:32370.3x1 lm		

Flux out:13058 lm



Note:The Curves indicate the illuminated area and the average illumination when the luminaire is at different distance.

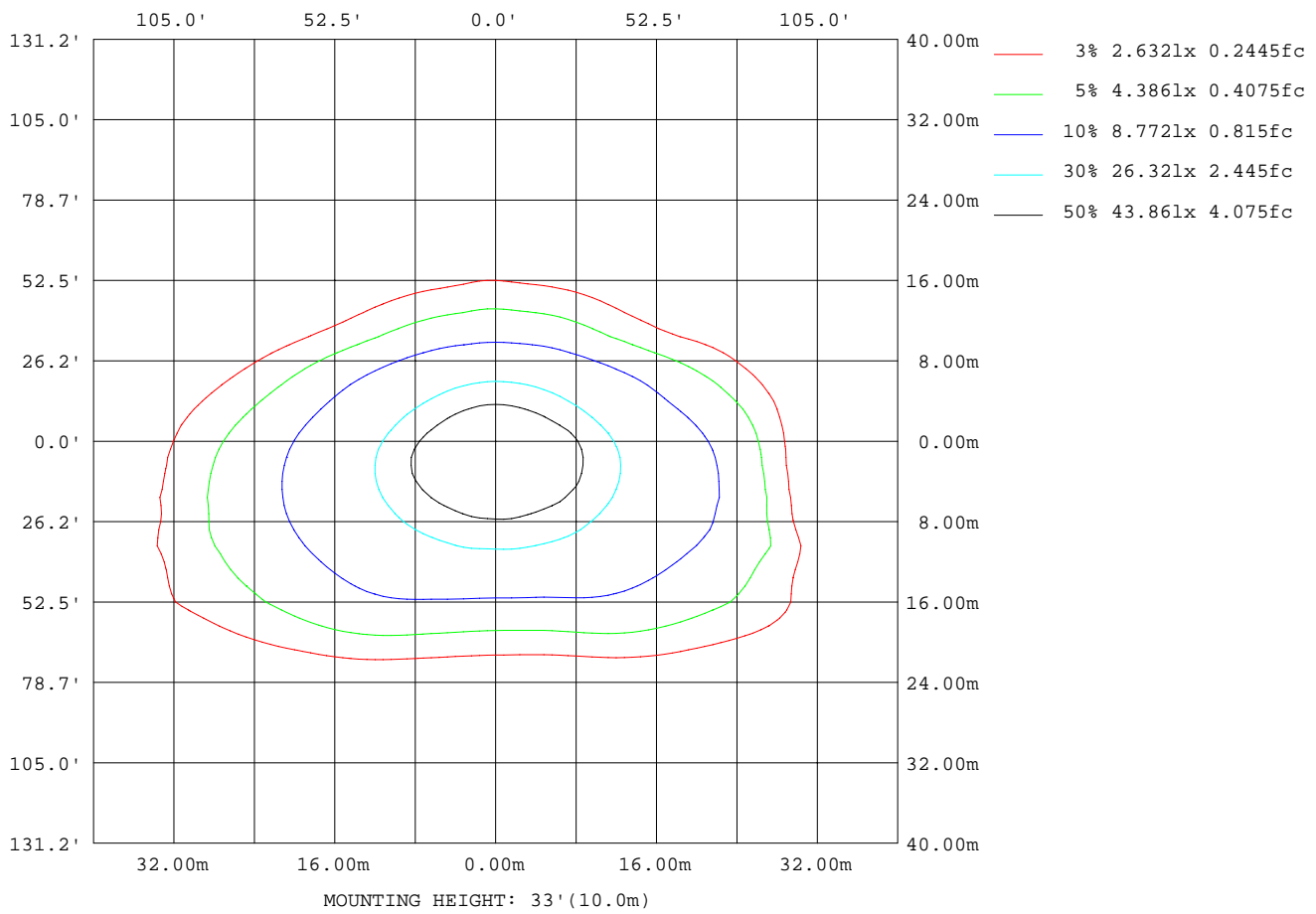
C Range: 0 - 360DEG
 C Interval: 5.0DEG
 Test Speed: HIGH
 Temperature:25DEG
 Operators:
 Test Date:2016-09-05

γ Range: 0 - 90DEG
 γ Interval: 0.5DEG
 Test System:EVERFINE GO-2000B_V1 SYSTEM V2.0.350
 Humidity:65.0%
 Test Distance:7.850m [K=1.0000]
 Remarks:

EVERFINE GONIOPHOTOMETERS SYSTEM TEST REPORT

ISOLUX DIAGRAM

Test:U:119.9V I:1.995A P:238.2W PF:0.9956 Lamp Flux:32370.3x1 lm		



C Range: 0 - 360DEG
 C Interval: 5.0DEG
 Test Speed: HIGH
 Temperature: 25DEG
 Operators:
 Test Date: 2016-09-05

γ Range: 0 - 90DEG
 γ Interval: 0.5DEG
 Test System: EVERFINE GO-2000B_V1 SYSTEM V2.0.350
 Humidity: 65.0%
 Test Distance: 7.850m [K=1.0000]
 Remarks:

EVERFINE GONIOPHOTOMETERS SYSTEM TEST REPORT

LED Avg.L Report

Test:U:119.9V I:1.995A P:238.2W PF:0.9956 Lamp Flux:32370.3x1 lm		

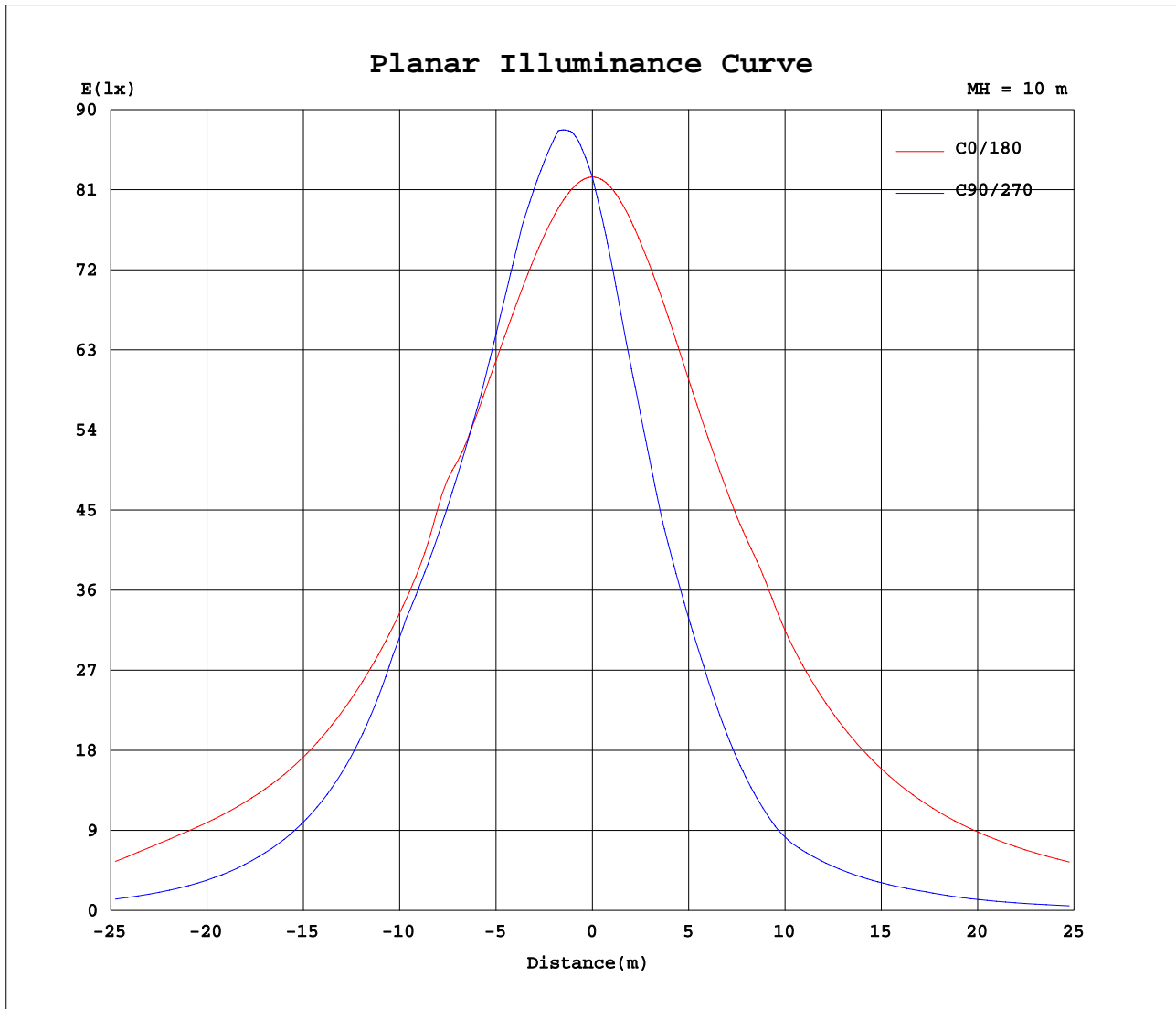
AvgL	cd/m2
L_0~180(65)av	252243
L_0~180(75)av	194796
L_0~180(85)av	16873
L_90~270(65)av	54807
L_90~270(75)av	19255
L_90~270(85)av	22304
L_45(65)av	142984
L_45(75)av	108714
L_45(85)av	54851

Standard: GB/T 29293-2012

C Range: 0 - 360DEG
 C Interval: 5.0DEG
 Test Speed: HIGH
 Temperature:25DEG
 Operators:
 Test Date:2016-09-05

γ Range: 0 - 90DEG
 γ Interval: 0.5DEG
 Test System:EVERFINE GO-2000B_V1 SYSTEM V2.0.350
 Humidity:65.0%
 Test Distance:7.850m [K=1.0000]
 Remarks:

Planar Illuminance Curve



C Range: 0 - 360DEG
 C Interval: 5.0DEG
 Test Speed: HIGH
 Temperature: 25DEG
 Operators:
 Test Date: 2016-09-05

γ Range: 0 - 90DEG
 γ Interval: 0.5DEG
 Test System: EVERFINE GO-2000B_V1 SYSTEM V2.0.350
 Humidity: 65.0%
 Test Distance: 7.850m [K=1.0000]
 Remarks:

EVERFINE GONIOPHOTOMETERS SYSTEM TEST REPORT

LUMINOUS DISTRIBUTION INTENSITY DATA

Test:U:119.9V I:1.995A P:238.2W PF:0.9956 Lamp Flux:32370.3x1 lm		

Table--1

UNIT: x10cd

C(DEG) γ (DEG)	0	5	10	15	20	25	30	35	40	45	50	55	60	65	70	75	80	85	90
0	824	824	824	824	824	824	824	824	824	824	824	824	824	824	824	824	824	824	824
5	824	829	835	840	844	849	854	858	862	866	869	872	874	876	877	878	879	880	880
10	826	837	847	857	867	876	883	890	895	900	903	907	910	912	914	916	917	918	918
15	832	848	864	879	891	902	910	917	924	926	926	926	926	925	925	924	924	923	923
20	842	865	887	905	919	930	939	940	940	939	938	937	936	934	933	931	930	929	928
25	857	887	914	935	951	959	961	961	960	958	955	948	939	932	925	920	916	912	911
30	879	916	948	971	985	989	990	989	984	972	960	947	934	923	914	906	900	896	893
35	918	958	991	1016	1029	1033	1032	1023	1007	989	970	952	934	920	910	904	899	894	889
40	942	1003	1052	1083	1096	1116	1086	1057	1043	1019	985	959	938	920	909	904	899	892	885
45	945	1006	1052	1074	1090	1090	1084	1064	1051	1033	1000	967	940	919	906	901	891	879	869
50	971	1038	1085	1112	1127	1123	1110	1086	1061	1037	1007	971	926	873	828	797	777	760	749
55	1001	1077	1128	1162	1174	1169	1146	1117	1084	1045	986	919	846	775	714	671	643	625	617
60	1053	1140	1197	1233	1244	1230	1195	1152	1090	1022	948	865	774	682	604	547	511	490	485
65	1127	1233	1304	1348	1357	1330	1254	1165	1085	1003	917	804	657	536	448	390	356	340	336
70	850	921	1043	1181	1379	1302	1243	1175	1055	831	658	520	409	323	262	221	199	189	187
75	204	183	210	350	592	760	980	817	605	430	301	208	141	95.6	69.3	57.2	51.6	50.6	52.0
80	25.3	20.5	21.0	31.4	40.8	191	312	217	121	56.5	37.6	30.5	26.4	25.4	26.2	25.0	25.1	26.6	28.4
85	10.8	11.3	11.5	12.6	15.2	19.5	24.4	34.7	40.8	33.0	22.2	18.6	16.7	16.4	17.4	16.9	16.9	17.7	18.7
90	8.60	8.57	8.05	7.53	7.02	6.63	6.36	6.17	6.02	5.86	5.87	6.13	6.90	7.50	8.45	8.82	8.82	8.75	9.02

C Range: 0 - 360DEG
 C Interval: 5.0DEG
 Test Speed: HIGH
 Temperature:25DEG
 Operators:
 Test Date:2016-09-05

γ Range: 0 - 90DEG
 γ Interval: 0.5DEG
 Test System:EVERFINE GO-2000B_V1 SYSTEM V2.0.350
 Humidity:65.0%
 Test Distance:7.850m [K=1.0000]
 Remarks:

EVERFINE GONIOPHOTOMETERS SYSTEM TEST REPORT

LUMINOUS DISTRIBUTION INTENSITY DATA

Test:U:119.9V I:1.995A P:238.2W PF:0.9956 Lamp Flux:32370.3x1 lm		

Table--2

UNIT: x10cd

γ (DEG)	C (DEG)																		
	95	100	105	110	115	120	125	130	135	140	145	150	155	160	165	170	175	180	185
0	824	824	824	824	824	824	824	824	824	824	824	824	824	824	824	824	824	824	824
5	880	879	878	877	875	874	871	869	865	861	857	853	849	844	839	834	829	824	818
10	917	916	915	913	911	908	905	902	897	893	887	880	873	864	854	844	833	823	809
15	923	922	922	922	923	923	922	922	921	919	912	904	895	884	871	855	839	823	802
20	928	928	928	929	930	931	932	932	932	932	930	929	919	906	891	872	850	827	799
25	911	912	916	920	926	933	941	947	948	948	947	944	941	931	912	890	862	832	795
30	893	896	900	907	916	925	935	946	957	967	968	966	961	955	938	913	879	841	795
35	888	892	898	905	911	920	933	948	963	977	989	996	991	982	969	941	903	857	801
40	884	890	899	905	910	919	935	955	977	997	1014	1027	1036	1027	1010	984	943	890	825
45	869	883	900	903	904	918	939	963	990	1020	1043	1054	1072	1061	1038	1007	954	891	816
50	753	775	804	831	861	904	940	970	1002	1031	1050	1069	1079	1077	1058	1024	973	903	821
55	625	651	687	727	779	841	904	961	1008	1043	1072	1096	1114	1113	1098	1058	1003	926	835
60	497	527	573	631	705	788	871	942	1002	1054	1098	1130	1153	1162	1145	1106	1045	959	853
65	345	369	411	473	562	682	830	931	1000	1059	1115	1171	1212	1230	1216	1174	1104	1005	876
70	192	207	234	276	339	426	537	674	846	1043	1140	1221	1292	1342	1318	1266	1177	1057	893
75	52.7	54.2	60.6	73.1	101	148	218	323	491	692	895	1162	1327	1202	1152	954	851	804	722
80	28.1	26.8	27.0	28.3	28.7	31.0	37.2	69.1	173	332	435	513	645	454	216	115	111	164	229
85	18.7	18.4	19.0	19.8	20.1	21.5	24.2	43.8	102	170	176	96.0	35.4	26.6	19.3	14.6	13.7	18.6	29.7
90	9.38	10.1	10.9	11.3	11.4	11.7	10.2	10.9	13.4	16.7	19.3	18.7	14.3	10.1	8.69	8.18	7.98	7.60	10.0

C Range: 0 - 360DEG
 C Interval: 5.0DEG
 Test Speed: HIGH
 Temperature:25DEG
 Operators:
 Test Date:2016-09-05

γ Range: 0 - 90DEG
 γ Interval: 0.5DEG
 Test System:EVERFINE GO-2000B_V1 SYSTEM V2.0.350
 Humidity:65.0%
 Test Distance:7.850m [K=1.0000]
 Remarks:

EVERFINE GONIOPHOTOMETERS SYSTEM TEST REPORT

LUMINOUS DISTRIBUTION INTENSITY DATA

Test:U:119.9V I:1.995A P:238.2W PF:0.9956 Lamp Flux:32370.3x1 lm		

Table--3 UNIT: x10cd

C(DEG) γ (DEG)	190	195	200	205	210	215	220	225	230	235	240	245	250	255	260	265	270	275	280
0	824	824	824	824	824	824	824	824	824	824	824	824	824	824	824	824	824	824	824
5	811	805	799	793	787	781	776	771	767	763	760	756	754	752	750	750	749	749	750
10	796	784	771	759	747	736	725	715	705	697	690	683	678	674	671	669	668	669	671
15	782	762	742	723	704	686	670	656	645	634	625	617	610	605	601	599	598	598	601
20	771	743	715	688	663	642	623	605	589	575	563	552	544	537	532	528	527	528	531
25	759	723	687	655	628	602	577	555	535	519	508	498	490	484	479	477	476	476	479
30	749	704	662	627	593	562	533	512	493	476	462	450	440	433	428	425	424	425	428
35	745	690	646	604	563	529	500	476	454	434	413	396	382	372	365	360	359	361	365
40	755	691	633	581	539	501	466	436	405	379	355	335	319	308	301	296	294	296	301
45	739	674	609	556	510	466	423	384	351	321	296	274	257	244	239	235	234	236	239
50	738	661	593	535	479	422	372	330	294	264	243	230	220	213	211	210	209	209	211
55	742	653	579	508	435	372	318	277	252	234	219	207	197	190	189	190	189	187	188
60	743	643	556	466	384	316	274	246	225	209	195	183	173	167	166	169	169	166	165
65	739	620	513	414	331	274	235	211	194	180	165	151	139	129	125	128	127	124	124
70	730	586	464	359	279	222	187	167	152	137	125	113	102	88.9	84.0	85.9	86.1	81.6	81.2
75	617	489	372	281	210	163	136	118	105	93.4	83.0	74.2	63.9	50.3	44.9	46.9	47.7	42.5	40.6
80	243	235	201	162	120	93.3	80.9	70.8	64.2	58.4	53.3	49.3	43.7	34.1	30.2	32.0	32.5	28.6	26.7
85	44.3	55.0	46.5	47.9	49.0	46.5	44.6	40.7	37.1	34.0	31.3	29.4	26.8	21.5	19.3	20.2	20.2	18.1	16.8
90	10.3	10.3	10.3	10.5	10.2	10.0	9.93	9.81	9.48	9.20	9.09	9.28	9.46	8.60	8.28	8.49	7.87	7.72	6.99

C Range: 0 - 360DEG	γ Range: 0 - 90DEG
C Interval: 5.0DEG	γ Interval: 0.5DEG
Test Speed: HIGH	Test System:EVERFINE GO-2000B_V1 SYSTEM V2.0.350
Temperature:25DEG	Humidity:65.0%
Operators:	Test Distance:7.850m [K=1.0000]
Test Date:2016-09-05	Remarks:

EVERFINE GONIOPHOTOMETERS SYSTEM TEST REPORT

LUMINOUS DISTRIBUTION INTENSITY DATA

Test:U:119.9V I:1.995A P:238.2W PF:0.9956 Lamp Flux:32370.3x1 lm		

Table--4

UNIT: x10cd

C(DEG) \ γ (DEG)	285	290	295	300	305	310	315	320	325	330	335	340	345	350	355				
0	824	824	824	824	824	824	824	824	824	824	824	824	824	824	824				
5	752	754	756	759	763	767	771	776	781	787	793	799	805	811	818				
10	673	678	683	689	697	706	715	726	737	749	761	774	787	800	813				
15	605	610	617	625	635	647	659	674	691	710	730	750	771	791	812				
20	537	544	554	565	578	594	611	630	651	672	699	727	757	786	814				
25	484	492	501	512	525	541	563	588	614	643	673	706	745	783	820				
30	435	443	455	469	485	503	524	548	580	617	654	691	735	784	832				
35	374	386	402	422	445	465	490	520	556	594	638	689	746	806	865				
40	311	324	342	364	388	417	449	484	522	562	608	670	732	798	872				
45	247	262	280	303	328	359	394	436	485	534	586	646	717	789	870				
50	216	225	235	247	267	297	335	381	437	503	567	633	710	795	885				
55	194	202	212	223	236	252	274	318	378	452	539	619	700	799	903				
60	170	178	187	198	209	223	241	268	309	386	483	589	687	801	932				
65	130	140	152	164	179	190	203	228	264	324	425	543	673	807	972				
70	85.8	96.1	106	115	126	138	152	178	212	268	351	449	552	668	768				
75	43.2	52.0	58.3	63.5	70.6	79.1	86.2	105	136	172	205	250	264	271	253				
80	27.9	33.3	34.8	34.6	34.4	33.7	24.5	29.5	43.7	66.6	77.8	69.3	71.3	56.6	40.6				
85	17.4	20.0	20.5	20.5	20.5	20.0	15.7	15.1	14.2	13.6	13.1	12.8	15.8	13.6	11.6				
90	6.81	6.48	6.30	6.33	6.61	6.99	7.37	7.72	8.04	8.31	8.51	8.63	8.65	8.58	8.42				

C Range: 0 - 360DEG γ Range: 0 - 90DEG
C Interval: 5.0DEG γ Interval: 0.5DEG
Test Speed: HIGH Test System: EVERFINE GO-2000B_V1 SYSTEM V2.0.350
Temperature: 25DEG Humidity: 65.0%
Operators: Test Distance: 7.850m [K=1.0000]
Test Date: 2016-09-05 Remarks: